

AUCTION

SATURDAY, JAN. 9TH

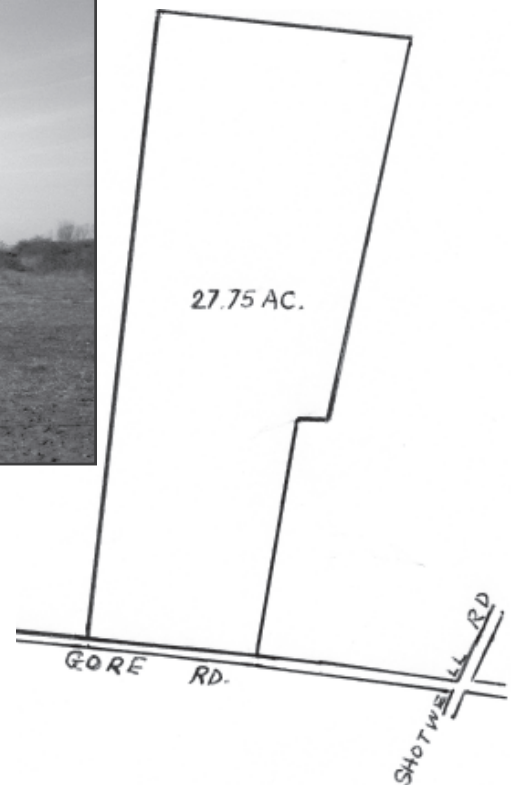
10:00 A.M.

27.75 ACRES ± CROPLAND or PASTURE

Location: Gore Road • Lawrenceburg, TN

Directions: From Lawrenceburg, go Hwy. 64 W. to Gore Road. Turn left and go to sale site. WATCH FOR AUCTION SIGNS & ARROWS!

LOOK IT OVER BEFORE SALE DAY!!



Comments:

The tract of land fronts Gore Road 497 feet. It is fenced on 3 sides and is now sown in permanent grass. There is a good stock pond on the property. The land would also be suitable for row crop or subdividing.

TERMS OF SALE: 10% down day of sale. Balance due on or before Feb. 9, 2010. Possession with the deed; 2010 taxes to be assumed by purchaser. For more information contact:

**EULAN
HOOPER**

Thomas Kobeck: 931-242-3685
Owner/Auctioneer/Aff. Broker
Eulan Hooper: 931-762-7088
Broker-Auctioneer

102 Weakley Creek Rd.
Lawrenceburg, TN

931-762-3399

www.EULANHOOPER.com
Real Estate Lic. #255927
Auction Lic. #1805
AL Lic. #5034

**REALTY
AUCTION**

Guy T. Hester: 931-629-0078
Auctioneer/Aff. Broker
Robert Smith 931-852-4162
App. Auctioneer